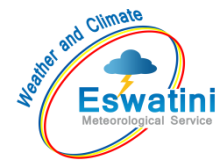


AGROMETEOROLOGICAL BULLETIN

Doc No: TEA 3/3/7/2 F-004
Revision No: 1
Effective Date: 01.07.2017
Page No: 1 of 5
Approved by:



REPORTING PERIOD:
01 – 10 DECEMBER 2024



ISSUE No.: 07

SEASON: 2024/25

RELEASED:13/12/2024

CONTENTS

CONTENTS	1
HIGHLIGHTS	1
RAINFALL AND TEMPERATURES	2
RAINFALL	2
TEMPERATURES	3
MAIZE AND OTHER CROPS.....	3
CURRENT FARMING ACTIVITY	3
MAIZE CROP STAGE AND CONDITION ..	3
OTHER CROPS	3
LIVESTOCK AND PASTURES	4
WATER SITUATION	4
MEDIUM-TERM OUTLOOK	4
RAINFALL	4
TEMPERATURE.....	4
SOIL MOISTURE	4
WIND SPEED	4

HIGHLIGHTS

- **Not much rainfall observed...**
- **Fair vegetation condition...**
- **No reported land preparation activities...**
- **Improvement in rainfall is anticipated...**
- **Cool to warm temperatures forecasted...**
- **Improvement in soil moisture expected...**

Compiled and Issued by: Agrometeorological Unit,

Swaziland Meteorological Service, Ministry of Tourism and Environmental Affairs.

Box 2652, Mbabane, Swaziland. ☎ (+268) 2404 8859 / 2404 6274. Fax: 2404 1530

E-mail: dudu@swazimet.gov.sz

AGROMETEOROLOGICAL BULLETIN

Doc No: TEA 3/3/7/2 F-004

Revision No: 1

Effective Date: 01.07.2017

Page No: 2 of 5

Approved by:

RAINFALL AND TEMPERATURES

RAINFALL

Dry conditions continued to persist in the 1st dekad of December 2024 (**Figure 1**) and (**Map 1**).

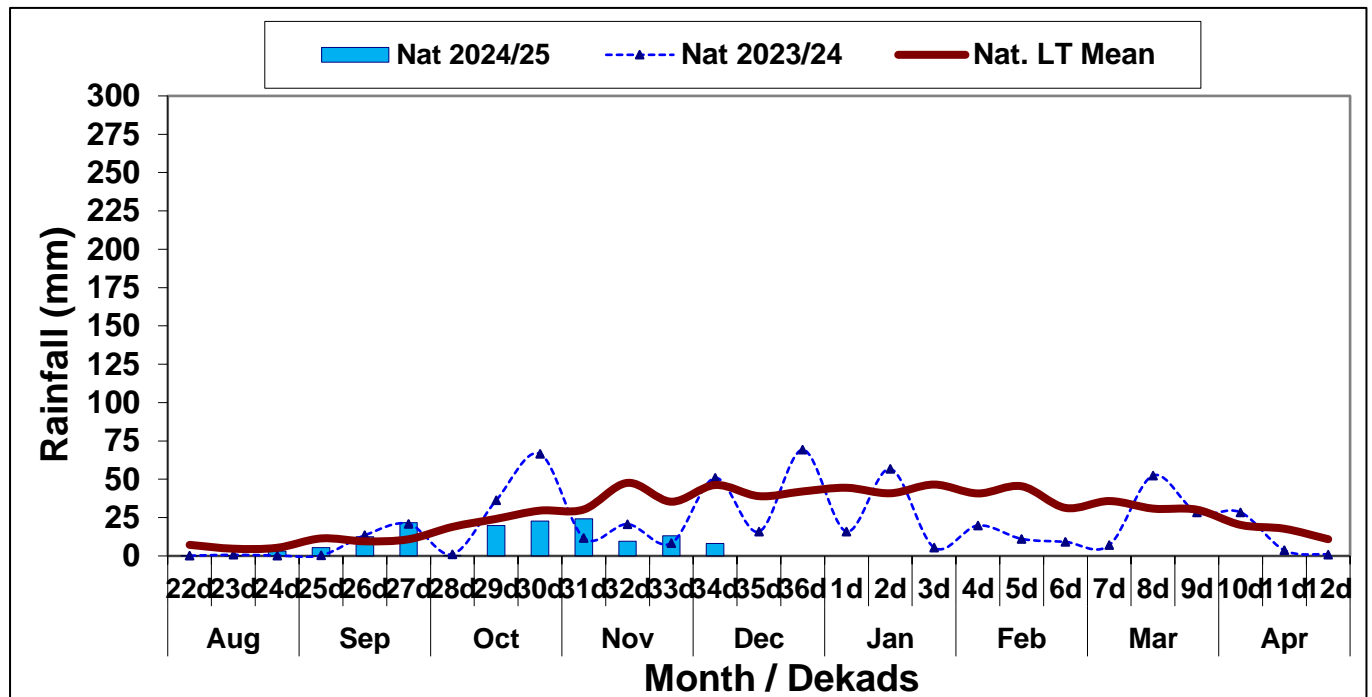
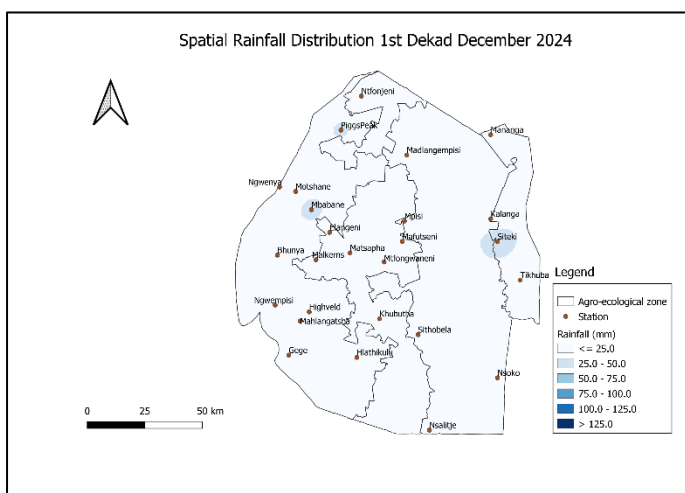
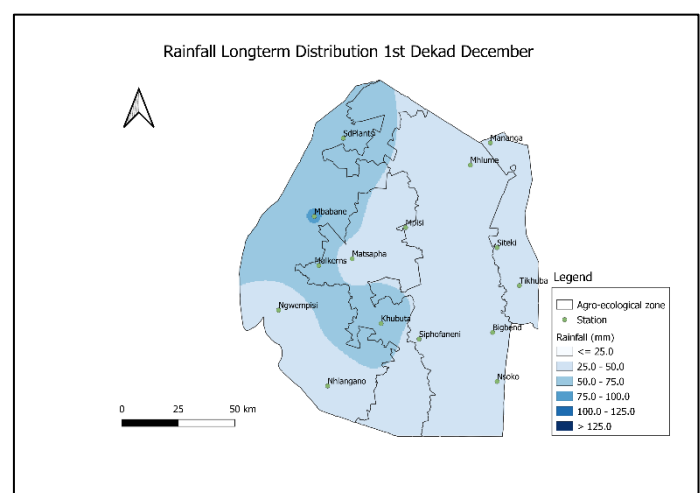


Figure 1: Rainfall distribution 1st dekad December 2024



Map 1: Spatial rainfall distribution 1st dekad December 2024



Map 2: Rainfall Longterm distribution 1st dekad December

Compiled and Issued by: Agrometeorological Unit,

Swaziland Meteorological Service, Ministry of Tourism and Environmental Affairs.

Box 2652, Mbabane, Swaziland. (+268) 2404 8859 / 2404 6274. Fax: 2404 1530

E-mail: dudu@swazimet.gov.sz

AGROMETEOROLOGICAL BULLETIN

Doc No: TEA 3/3/7/2 F-004

Revision No: 1

Effective Date: 01.07.2017

Page No: 3 of 5

Approved by:

Not much rainfall was observed in all the Agro-ecological zones, as the reporting period was mostly dry (**Table 1**).

Table 1: Rainfall (mm) 1st dekad December 2024

	HV	MV	LV	LP	
2023/24	45	53	50	65	
Average	59	50	34	44	
2024/25	11	6	4	22	
Anomaly	-48	-44	-30	-22	

TEMPERATURES

Warm to hot temperatures were observed during the reporting period (**Figure 2**).

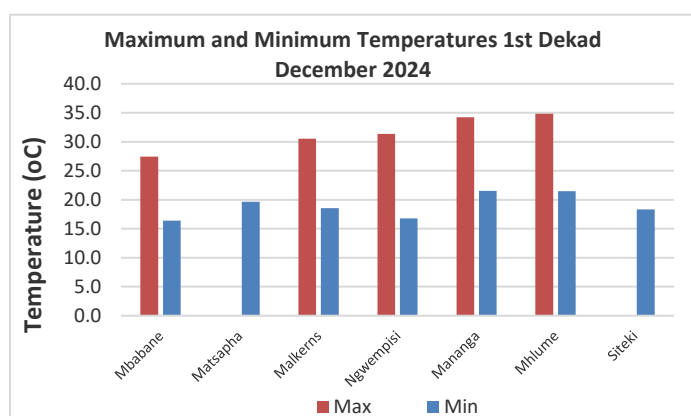


Figure 2: Maximum and Minimum temperatures 1st dekad of December 2024

MAIZE AND OTHER CROPS

CURRENT FARMING ACTIVITY

Some farmers have commenced land preparation.

MAIZE CROP STAGE AND CONDITION

Maize has not been planted as yet.

OTHER CROPS

No other crops have been reported to have been planted.

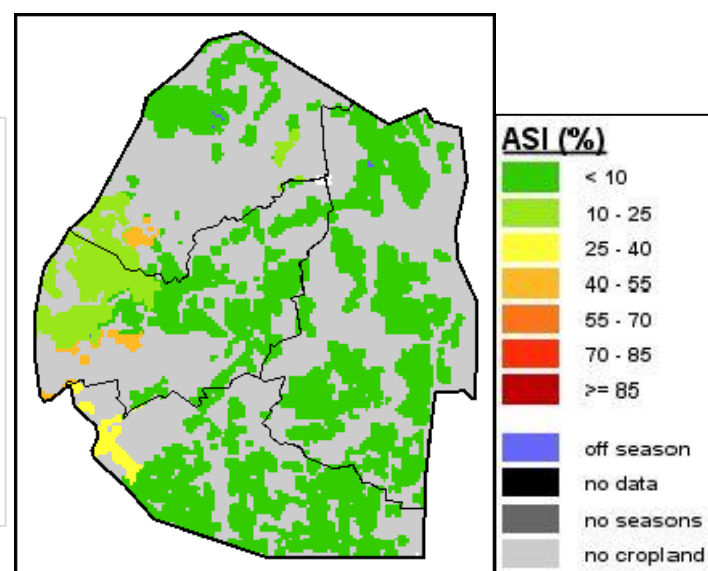


Image 1: Agriculture Stress Index 1st dekad December 2024 Source: FAO-GIEWS

Compiled and Issued by: Agrometeorological Unit,

Swaziland Meteorological Service, Ministry of Tourism and Environmental Affairs.

Box 2652, Mbabane, Swaziland. ☎ (+268) 2404 8859 / 2404 6274. Fax: 2404 1530

E-mail: dudu@swazimet.gov.sz

AGROMETEOROLOGICAL BULLETIN

Doc No: TEA 3/3/7/2 F-004

Revision No: 1

Effective Date: 01.07.2017

Page No: 4 of 5

Approved by:

LIVESTOCK AND PASTURES

Livestock is in fair condition and rangelands are reported to be in fair condition.

WATER SITUATION

Some dam levels are very low as a result of dry and hot conditions that have been prevailing in the past ten days.

MEDIUM-TERM OUTLOOK

RAINFALL

Increase in rainfall is expected in the outlook period.

TEMPERATURE

Cool to warm temperatures are anticipated in the outlook period.

SOIL MOISTURE

An improvement in soil moisture is expected in the outlook period.


WIND SPEED

Wind will generally be light to moderate in the outlook period

NB: Outlook period is ten days from date of issue

Compiled and Issued by: Agrometeorological Unit,

Swaziland Meteorological Service, Ministry of Tourism and Environmental Affairs.

Box 2652, Mbabane, Swaziland.  (+268) 2404 8859 / 2404 6274. Fax: 2404 1530

E-mail: dudu@swazimet.gov.sz

AGROMETEOROLOGICAL BULLETIN

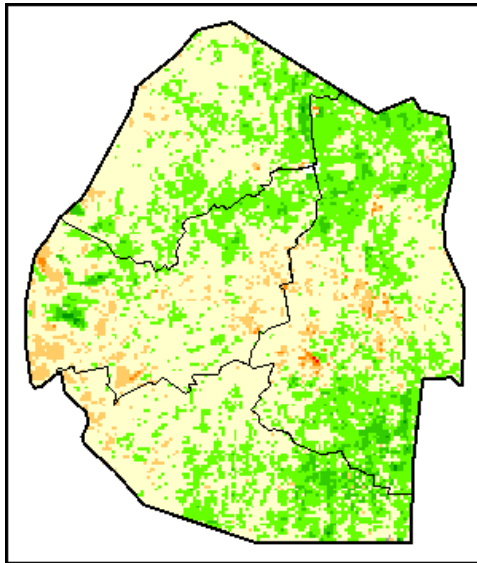
Doc No: TEA 3/3/7/2 F-004

Revision No: 1

Effective Date: 01.07.2017

Page No: 5 of 5

Approved by:



Legend

Difference to LTA

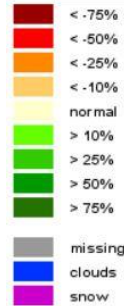
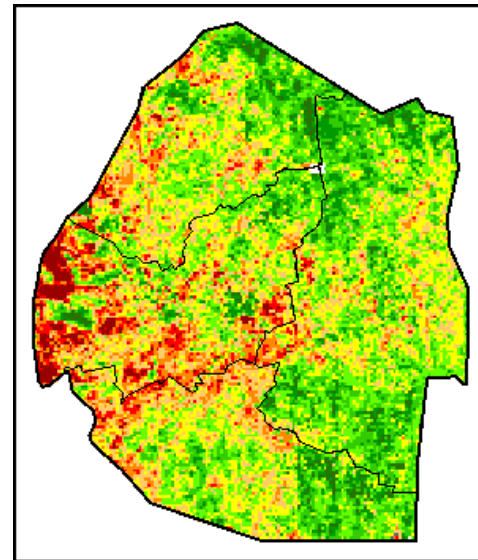


Image 2: Normalized Difference Vegetation Index (NDVI) Anomaly (1st Dekad December 2024)
Source: FAO-GIEWS



Legend

VHI

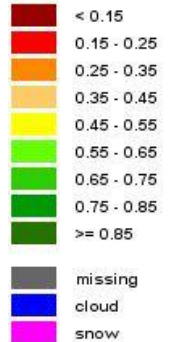


Image 3: Vegetation Health Index (VHI) (1st Dekad December 2024)
Source: FAO-GIEWS

Compiled and Issued by: Agrometeorological Unit,

Swaziland Meteorological Service, Ministry of Tourism and Environmental Affairs.

Box 2652, Mbabane, Swaziland. ☎ (+268) 2404 8859 / 2404 6274. Fax: 2404 1530

E-mail: dudu@swazimet.gov.sz